



PROJECT PORTFOLIO - HOTELS

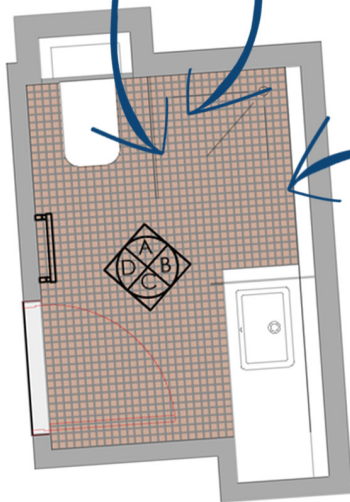
R.C.G.P

Purchased in 2010 by the Royal College of General Practitioners, 30 Euston Square is originally the Grade 2 Listed HQ of the London, Edinburgh & Glasgow Assurance Company. The conversion was to provide dedicated facilities for visiting membership & staff including a conference centre, auditorium, & accommodation.

Bathroom Engineering were asked to overcome known compatibility problems between underfloor heating systems & waterproofing membranes and also devise a standard shower design for each of the 40x ensuite study bedrooms.



*Aquaeseal
Rubber Paint*



*DECO M
Gully*

5

Bathroom Type 04 Key Plan
Scale: 1:50

Having experienced compatibility problems previously using competitor tanking systems, the sub-contractors needed a waterproof membrane able to withstand higher heat outputs, & be suitable to seal the walls of the showers. Both waterproof tanking membranes offered by Bathroom Engineering overcame these problems allowing the contractor to choose Aquaeseal, a sealing membrane requiring less experience & training to install.

The contractor also planned to fit traditional shower trays until Bathroom Engineering showed how they could build a low cost, high quality tiled wet room shower using linear drains. With a wide range of shower, drains to choose from, the "Engineer it for You" service analysed the specifications, predicted the likely flow rates and identified the most suitable linear floor gully. Additional advice regarding gradient direction, sectional build ups, and construction methodology also helped create the ultimate high quality luxury showers for visiting G.P's & staff.