

Issued - 31 October 2019

### **TECEpuremetal™**

A high specification stainless steel shower drain designed for all floor types, including UK style 'WOOD over JOIST' & also concrete floors. Features include stainless steel chassis, UK compliant trap (50mm water seal), & stainless steel grate with a 'brushed finish'. A simple, flexible & easy to install shower drain, that suits all shower installations. E&OE



### **PRODUCT CHARACTERISTICS**

- Suits refurbishment & new build projects, universal shower drain for all common floor substrates, incl. wood over joist, concrete screed etc.
- Very high quality polished 304 grade stainless steel chassis, suitable for common cleaners (when applied according to instructions)
- Central outlet position, accommodates different trap options, that rotate to connect the trap to soil pipes in any direction.
- Standard horizontal trap has a UK compliant 50mm water seal, that suits optional secondary foul air trap (with a physical vapour barrier).
- Optional traps offer vertical outlets, lower build in heights, or ultra high flow rates. All trap options are rotatable through 360°.
- Supplied as standard with UK style DN50 > 2" adaptor.
- Chassis incl. stainless steel installation flange to support the chassis in common U.K. style timber floors.
- Suits matching 'Seal System' waterproof sealing membrane.
- Vertical upstand on chassis suits all finishes, and the matching grate means height adjustment is not required.
- Premium quality, 'brushed' stainless steel grate
- Standard 'Seal System' self-adhesive waterproof tanking tape is supplied, and is compatible with all common liquid style membranes.
- Optional 'FireStop Protection Set' for Concrete Slab floors, suits vertical traps & provides protection against fire ingress between floors

### **APPLICATIONS**

TECEpuremetal™ shower channels are wide collection vessels used within wet room showers, & are offered in various lengths. Suits:

- En-Suites – small bathrooms where space efficiency is at a premium
- High End Designer Bathrooms – Large sizes add to the feeling of space within a shower area
- Refurbishments & New Build
- Floor Substrates – Designed for concrete floors & screeds, as well as UK wooden floor boards

### **MATERIAL**

- Drain Chassis : Chassis - 0.75<sup>m</sup>/<sub>m</sub> 304 Stainless Steel
- Grate : Grate - 0.85<sup>m</sup>/<sub>m</sub> 304 Stainless Steel
- Trap : PP Trap (Matching U.K. Adaptor Supplied : ABS)

### **TECHNICAL DATA**

- Size Channel, Standard, Stock : 700, 800, 900, 1000, 1200, 1500<sup>m</sup>/<sub>m</sub>
- Size Channel, 'Made to Order' : Information available on request (N.B. Min. production volumes & Max. sizes apply – Call for Info)
- Visible Size : Width = 71<sup>m</sup>/<sub>m</sub> : Length = Nominal, less 49<sup>m</sup>/<sub>m</sub> (e.g. 800<sup>m</sup>/<sub>m</sub> drain is visible grate of 751<sup>m</sup>/<sub>m</sub> x 71<sup>m</sup>/<sub>m</sub>)
- Cross Section Profile : Chassis Channel : 27<sup>m</sup>/<sub>m</sub> overall (13<sup>m</sup>/<sub>m</sub> sub-flange cross section, & 14<sup>m</sup>/<sub>m</sub> vertical upstand)
- Waste & Trap : Outlet DIN 50 : Trap has UK compliant 50<sup>m</sup>/<sub>m</sub> Water Seal (options incl. 30mm & 35mm). See options
- Suitable Floor Covering : Natural Stone or Tile, to all standard finishes, to a max. of 14<sup>m</sup>/<sub>m</sub> build up, incl. adhesive
- Installation Sealing Kit : INCLUDED - 'Seal System' self-adhesive waterproof tanking tape fitted on site to surrounding flange  
: Optional – Matching AquaeGUARD Waterproof Membranes ~ See Data Sheets
- Gradient : A floor gradient of max. 1% > 1.5% must be built into the surrounding floors

### **CAPACITY**

- Waste & Trap - Standard : 50<sup>m</sup>/<sub>m</sub> Water Seal, Horizontal Outlet (38 > 48 Ltrs/Min) location dependant

### **TRAP OPTIONAL EXTRAS**

- Waste & Trap : Horizontal (31 > 37 Ltrs/Min) location dependant
- Waste & Trap : Horizontal (28 > 33 Ltrs/Min) location dependant
- Waste & Trap : Vertical (28 > 33 Ltrs/Min)

Issued - 31 October 2019

**INSTALLATION INSTRUCTIONS**

- See Separate Sheet : Included in Package

**PACKAGING**

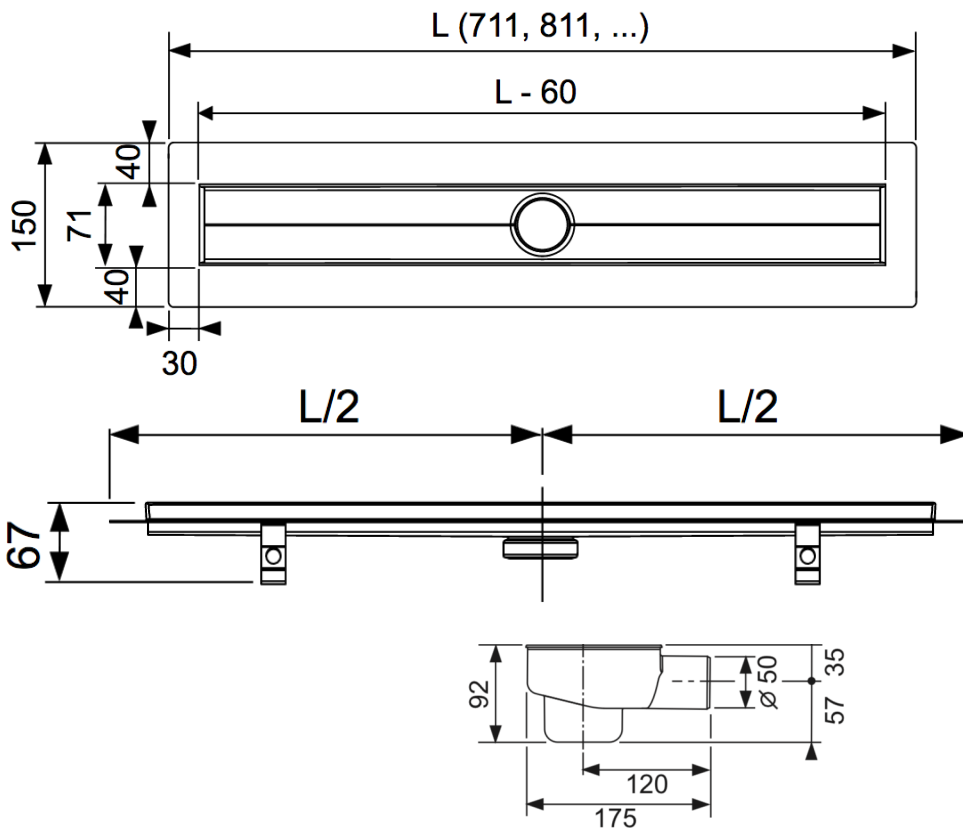
- Cardboard / Sleeve : Made to suit Shower Channel

**CONTENTS (complete shower channel drain) comprising) :**

- Stainless steel, chassis with centre outlet, supplied <sup>7</sup>/<sub>16</sub> waterproofing membrane for fitting on site
- Foul air trap – Rotatable, push fit, with horizontal DN 50<sup>m</sup> outlet, DN50 > 2" adaptor, BS compliant 50<sup>m</sup>/<sub>m</sub> water seal
- Stainless steel grate, premium "Brushed" finish
- Height adjustable legs (for concrete floors)
- Installation Instructions

**SPECIFICATION** – TECEpuremetal™ linear shower channel drain in 304 Stainless Steel with supporting installation flange, waterproofing membrane, high flow, rotatable (360°) trap & matching removable grate for tile & adhesive to 14<sup>m</sup>/<sub>m</sub>.

Range	Size	ART No.
TECEpuremetal™	700 <sup>m</sup> Shower Drain Chassis, & Trap c/w S/Steel 'Brushed' Grate, for Tiles. Incl. Seal System	WD 008 00472
TECEpuremetal™	800 <sup>m</sup> Shower Drain Chassis, & Trap c/w S/Steel 'Brushed' Grate, for Tiles. Incl. Seal System	WD 008 00473
TECEpuremetal™	900 <sup>m</sup> Shower Drain Chassis, & Trap c/w S/Steel 'Brushed' Grate, for Tiles. Incl. Seal System	WD 008 00474
TECEpuremetal™	1000 <sup>m</sup> Shower Drain Chassis, & Trap c/w S/Steel 'Brushed' Grate, for Tiles. Incl. Seal System	WD 008 00475
TECEpuremetal™	1200 <sup>m</sup> Shower Drain Chassis, & Trap c/w S/Steel 'Brushed' Grate, for Tiles. Incl. Seal System	WD 008 00477
TECEpuremetal™	1500 <sup>m</sup> Shower Drain Chassis, & Trap c/w S/Steel 'Brushed' Grate, for Tiles. Incl. Seal System	WD 008 00480


**Dimensional Guide**

**Size :**  
 Flange Space Required :  
 $L + 11^m/m$   
 Visible Void & Grate :  $L - 60^m/m$   
 e.g. : 800 Drain Chassis is  
 Below Finish :  $811^m/m \times 151^m/m$   
 Visible Grate :  $751^m/m \times 71^m/m$

**Build-In Height** with Standard Trap  
 to :  
 Finished Floor Level :  $120^m/m$   
 Un-finished Floor/Flange :  $107^m/m$

E&OE – We reserve the right to alter & amend specifications without prior notice. This is not a specification document & does not guarantee performance  
 © Bathroom Engineering™  
 October 2019

