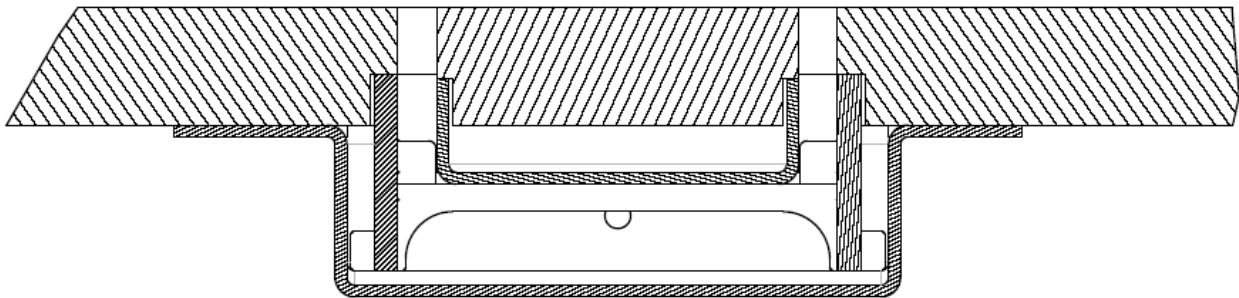


2 September 2011

Tel: +44 (0) 1761 241133  
Fax: +44 (0) 1761 241134  
www.bathroom-engineering.co.uk

## DRAWING for INSTALLATION of NATURAL STONE



SECTION A-A

The above image is a CROSS SECTION of the TAF2 linear floor gully (aka shower channel) for residential showers.

You can see the // section shows the natural stone fitted, & maintains the gap

1. Gully set into floor
2. H Section Frame Support
3. U Section 'Grate' or Insert for Tile / Natural Stone
4. Rebate on underside of stone fitted over main floor
5. Rebate on underside of stone fitted into 'Insert'